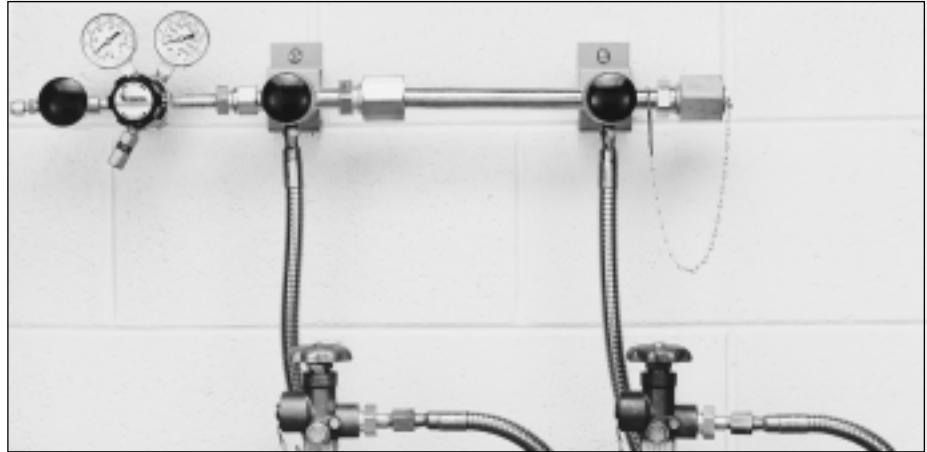


528 Series Maniflex

High Purity Modular Gas Distribution System

The 528 Series Maniflex Modular Gas Distribution System is a flexible modular system designed for centralized high purity gas distribution regardless of facility constraints. The modules contained in the header are available in standard, compact, or double-row versions, allowing many combinations which will adapt to any physical environment. The Maniflex headers themselves may be purchased as a complete system (unassembled) or as individual components.



Advanced Features

- *Modular Design*
Flexible field installation
- *Integral Diaphragm Valves*
Leak-tight integrity
No gas contamination
- *Variable Line Pressure*
Line pressure changeable on site
- *Brass or Chrome-Plated Brass*
No possibility of gas contamination
- *Metal to Metal Field-Assembled Joints*
Easy leak-tight field assembly
Ease of transportation
- *Silver-Brazed Modules*
Contamination-free installation

How to Order a Maniflex System Specifications

The Maniflex manifold systems are used either as a system with a regulator or as a part of an AutoSwitch automatic switchover system. Both options are depicted on page 27. Please note that AutoSwitch matrices already include Maniflex systems.

Step One Choose a material from those available in column A. Consult the table beginning on page 5 for information about gas compatibility.

Step Two Select an orientation from those available in column B. Standard manifold headers space cylinders 12" apart; compact manifold headers space cylinders 6" apart. Right means that the extension connects to the right inlet side of a regulator or switchover. A single row manifold has one cylinder pigtail attached at each valve station; a double row manifold has two cylinder pigtails attached at each valve station. To use the Maniflex system with a switchover, you must order both a right side extension and a left side using two separate part numbers.

Step Three Choose a pigtail style from those available in column C.

Step Four Determine the number of cylinders that will be used with the extension.

Step Five Specify the connection type for the pigtails.

Step Six To connect the outlet of the manifold system to an AutoSwitch, order the manifold connector assembly as the inlet connection for the AutoSwitch when ordering the AutoSwitch (page 72). To connect the outlet of the manifold system to a regulator, order the appropriate optional CGA adapter from the accessories listed on page 27.

Maximum Inlet Pressure
3000 PSIG (210 BAR)

Temperature Range
-40°F to 140°F (-40°C to 60°C)

Inlet Connections
¼" FPT (Brass)
CGA 346 (Stainless Steel)

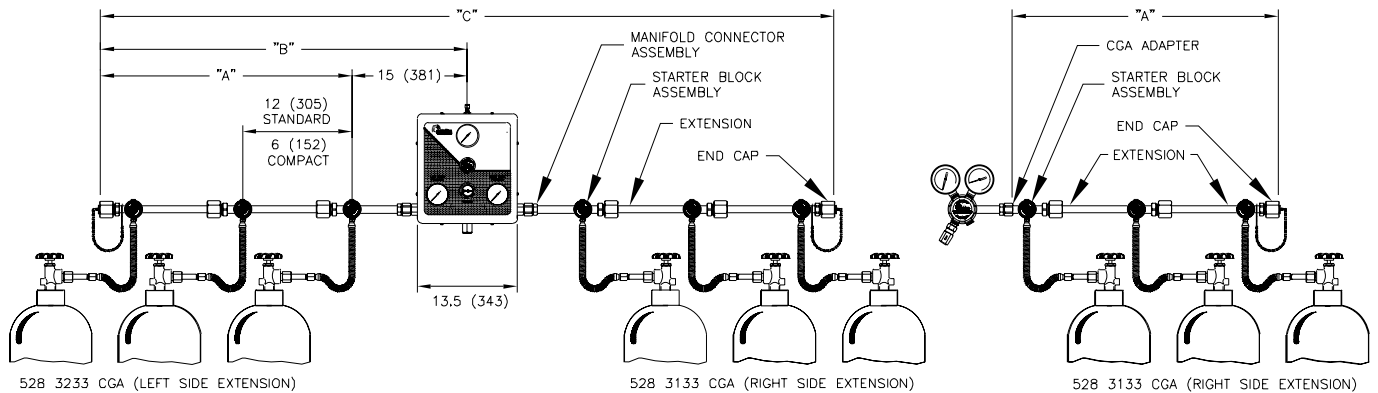
Outlet Connections
½" FPT

Header
0.875 OD x 0.125 wall (Brass)
0.625 OD x 0.065 wall (Stainless)

Diaphragm Valve
Brass or stainless steel barstock (Body)
PCTFE (Seat)
316 stainless steel (Stems)
316 stainless steel (Diaphragms)

Dimensions *(“A”, “B”, and “C” refer to the lengths specified on the diagram below.)*

Cylinders per Extension	1	2	3	4	5	6	7	8	9	10
“A” Standard (Single Row)	6”	18”	30”	42”	54”	66”	78”	90”	102”	114”
“B” Standard (Single Row)	15”	27”	39”	51”	63”	75”	87”	99”	111”	123”
“C” Standard (Single Row)	30”	54”	78”	102”	126”	150”	174”	198”	222”	246”
Weight Standard (Single Row)	5.7 lbs	11.8 lbs	17.9 lbs	24.0 lbs	31.1 lbs	36.2 lbs	42.3 lbs	48.4 lbs	54.5 lbs	60.6 lbs
“A” Compact (Single Row)	6”	12”	18”	24”	30”	36”	42”	48”	54”	60”
“B” Compact (Single Row)	15”	21”	27”	33”	39”	45”	51”	57”	63”	69”
“C” Compact (Single Row)	30”	42”	54”	66”	78”	90”	102”	114”	126”	138”
Weight Compact (Single Row)	5.7 lbs	11.2 lbs	16.7 lbs	22.2 lbs	27.7 lbs	33.2 lbs	38.7 lbs	44.2 lbs	49.7 lbs	55.2 lbs



Switchover System

Regulator System

Ordering Information

528-	A	B	C	D	-CON
Series 528	Material 1: Brass 2: Chrome-Plated Brass 3: Stainless Steel	Orientation 1: Standard Single Row (right) 2: Standard Single Row (left) 3: Standard Double Row 4: Compact Single Row (right)* 5: Compact Single Row (left)* 6: Compact Double Row* <i>*Not available in stainless steel</i>	Pigtail Style 0: None 3: 36” Flexible 316 Stainless Steel with Check Valve 4: 24” Flexible 316 Stainless Steel with Check Valve	Number of Cylinders 0: 10 cylinders 1: 1 cylinder 2: 2 cylinders 3: 3 cylinders 4: 4 cylinders 5: 5 cylinders 6: 6 cylinders 7: 7 cylinders 8: 8 cylinders 9: 9 cylinders	Pigtail Connection CGA DIN 477 BS 341 and others available

Maniflex Accessories

Option	Order No.	Description
Pigtail Assemblies (3 feet)	529-0030-CGA 529-0031-CGA	Flexible 316 stainless steel (CGA 346 x stainless steel CGA)* Flexible 316 stainless steel (¼” MPT x brass CGA)
Pigtail Assemblies (2 feet)	529-00XX-CGA 529-00XX-CGA	Flexible 316 stainless steel (¼” MPT x stainless steel CGA)* Flexible 316 stainless steel (¼” MPT x brass CGA)
CGA Adapter	529-0008-CGA 529-0009-CGA	Brass (½” MPT x CGA) Chrome-plated brass (½” MPT x CGA)

**Pigtail assembly includes check valve at cylinder end.*