



# 400 Series Regulators

# 492 SERIES

The 492 Series regulators are intended for primary pressure control of non-corrosive gases at a maximum inlet pressure of 6000 PSIG (415 BAR).

- Single Stage
- Piston-Sensed
- Ultra-High Pressure
- Chrome-Plated Brass Barstock Body

## Typical Applications

- Airplane strut charging
- Research and development laboratories
- Chemical manufacturing
- Aerospace hydraulic systems
- Pharmaceutical manufacturing
- Gauge calibration



## Features

- Large Piston Sensor**  
Safely control pressures to 6000 PSIG (415 BAR)
- CAPSULE® Seat**  
Increased serviceability and life
- Low Wetted Surface Area**  
Minimal purge requirements
- Field-Adjustable Pressure Limit**  
Safeguard downstream equipment
- Chrome-Plated Brass Barstock Body**  
Smooth surface finish
- Front and Rear Panel-Mountable**  
Versatile system configuration
- Pressure Ranges 0-750 to 0-6000 PSIG (0-50 to 0-415 BAR)**  
Broad range of applications
- Six Port Design**  
Flexible installation alternatives

## Materials

- Body**  
Chrome-plated brass barstock
- Bonnet**  
Chrome-plated brass barstock
- Seat**  
PCTFE 3000 and 4500 PSIG (210 and 310 BAR) inlet  
Arlon® (PEEK) (6000 PSIG inlet)
- Piston**  
Brass barstock
- Filter**  
10 micron sintered bronze
- Internal Seals**  
Viton® (encapsulated)

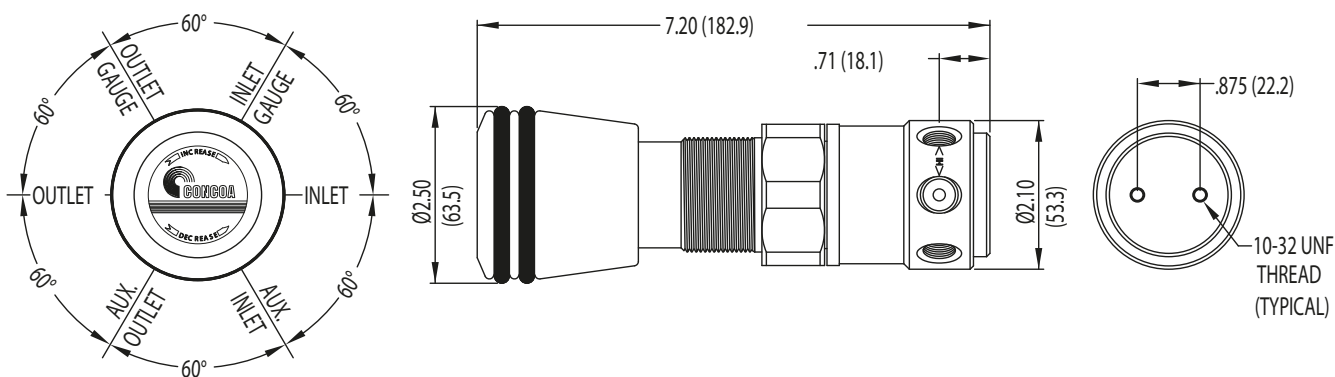
## Specifications

- Maximum Inlet Pressure**  
6000 PSIG (415 BAR)
- Temperature Range**  
-40°F to 140°F (-40°C to 60°C)
- Gauges**  
2 1/2" (53mm) diameter chrome-plated brass
- Ports**  
1/4" FPT
- Cv**  
0.1  
See page 204 for flow curves
- Weight (492 4952-677)**  
5.59 lbs. (2.54 kg)

# 400 Series Regulators



## Installation Dimensions



REGULATORS

## Ordering Information

| Series | A  | B   | C   | D                        | -CON                            | Options  |   |  |
|--------|--|---|---|--------------------------|---------------------------------|--|---|--|
| 492    | Outlet Pressure                                | Outlet Gauge  | Inlet Maximum   | Inlet Gauge              | Outlet Assemblies               | Assembly Gauges  | Inlet Connections                       | Installed Options  |
|        | <b>1:</b> 0-750 PSIG (50 BAR)                  | 0-1000 PSIG/ 0-70 BAR   | <b>0:</b> 6000 PSIG (415 BAR)*                            | None                     | <b>0:</b> 1/4" FPT              | <b>0:</b> Bare body <sup>†</sup>                                       | CGA DIN 477 BS 341 and others available | <b>B:</b> Protocol alarm station (110/220 VAC)                 |
|        | <b>2:</b> 0-1500 PSIG (0-100 BAR)              | 0-4000 PSIG/ 0-275 BAR  | <b>3:</b> 3000 PSIG (210 BAR)                             | 0-4000 PSIG/ 0-275 BAR   | <b>1:</b> 1/4" MPT              | <b>1:</b> Standard assembly (PSIG/kPa gauges)                          |   | <b>C:</b> Protocol switchover station                          |
|        | <b>3:</b> 0-2500 PSIG (0-170 BAR)              | 0-4000 PSIG/ 0-275 BAR  | <b>8:</b> 5500 PSIG (380 BAR)                             | 0-6000 PSIG/ 0-415 BAR   | <b>2:</b> 1/4" tube fitting     | <b>2:</b> Standard assembly (BAR/PSIG gauges)                          |   | <b>H:</b> Protocol switchover station with alarm (110/220 VAC) |
|        | <b>4:</b> 0-4500 PSIG (0-310 BAR)*             | 0-6000 PSIG/ 0-415 BAR  | <b>9:</b> 6000 PSIG (415 BAR)                             | 0-10,000 PSIG/ 0-700 BAR | <b>5:</b> Needle valve 1/4" MPT | <b>6:</b> Mirror image (BAR/kPa gauges)                                |   | <b>M:</b> Protocol station                                     |
|        | <b>5:</b> 0-6000 PSIG (0-415 BAR) <sup>†</sup> | 0-10,000 PSIG/ 0-700 BAR  | <i>*Only valid if D = 1 or 2 (outlet gauge specified)</i> |                          | <b>6:</b> 1/8" tube fitting     | <b>7:</b> Mirror image (BAR/PSIG gauges)                               |   | <b>Q:</b> Protocol purge station*                              |
|        | <b>6:</b> 0-3500 PSIG (0-240 BAR)*             | 0-6000 PSIG/ 0-415 BAR  |   |                          | <b>7:</b> 3/8" tube fitting     | <i><sup>†</sup>B must be 3, 8 or 9 (maximum pressure specified)</i>    |   | <i>*3000 PSIG (210 BAR) maximum inlet only valid if B=3</i>    |
|        |  | <i>*Not available with 3000 PSIG (210 BAR) maximum inlet pressure</i>             |   |                          |                                 | <b>F:</b> Needle valve 1/4" tube fitting                               |   |  |
|        |  | <i><sup>†</sup>Only available with 6000 PSIG (415 BAR) maximum inlet pressure</i> |   |                          |                                 | <b>M:</b> 6mm tube fitting   |   |  |
|        |  |   |   |                          |                                 | <i>Note: Outlet fittings and outlet valves are 316 stainless steel</i> |   |  |

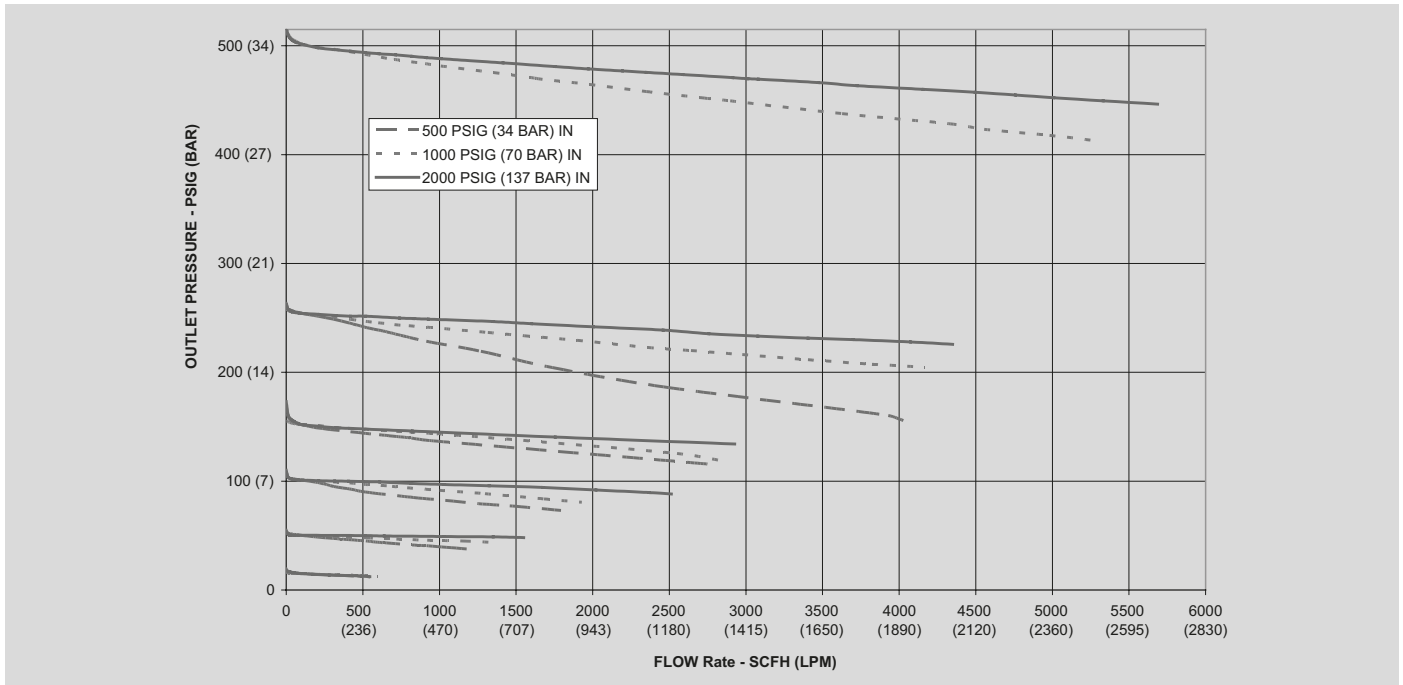
## Related Options

| Options         | Order No. | Description  |
|-----------------|-----------|--|
| Panel mount kit | 830 6483  | To mount the regulator using bonnet threads. Material: Chrome-plated brass |

# Regulator Flow Curves



## Flow Curves for 403, 405, 425, 435, 445 Series



## Flow Curves for 492, 493 Series

