



Chem Master SGM6230 Series

6.0 Purity Single Stage Stainless Steel Piston Manual Change Gas Control Panel



The Chem Master SGM6230 Series single stage twin cylinder manual change control panels are designed for primary pressure gas control of corrosive, toxic or high purity gases up to grade 6.0 purity (99.9999%), on gas distribution systems where slight pressure variation is acceptable.

- **SGM6231** Series | Single Stage Twin Cylinder Piston Manual Gas Change Control Panel, FKM Seal
- **SGM6232** Series | Single Stage Twin Cylinder Piston Manual Gas Change Control Panel, EPDM Seal



★ FEATURES

- High pressure isolation valves
- High pressure purge facility
- Single stage pressure regulation
- Process line isolation valve
- Encapsulated valve design
- Twin cylinder configuration

📦 MATERIAL

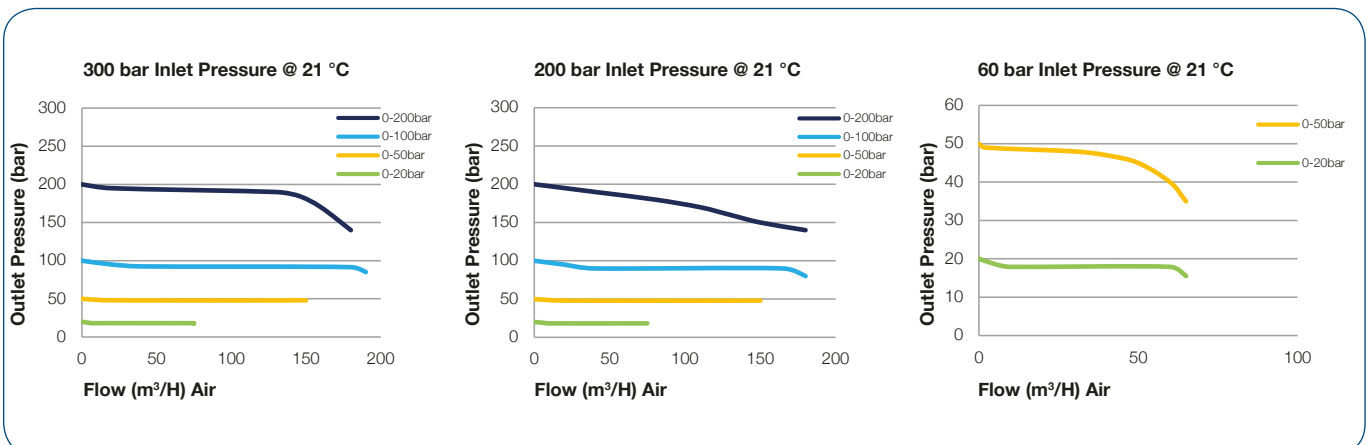
■ Body	316L Stainless Steel
■ Bonnet	Nickel Plated Brass Barstock
■ Piston	316L Stainless Steel
■ Seal	FKM / EPDM
■ Valve Seat	PCTFE
■ Filter	10 Micron 316L Stainless Steel

👍 SPECIFICATION

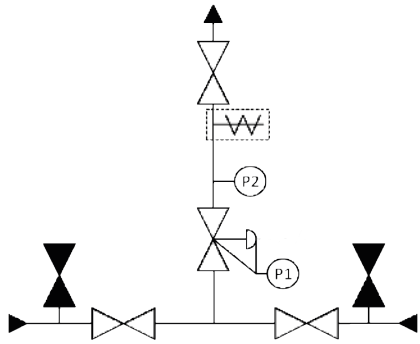
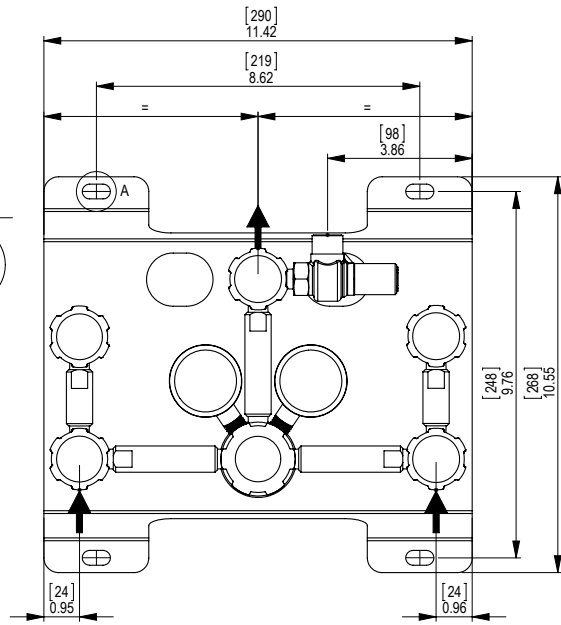
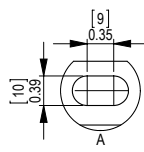
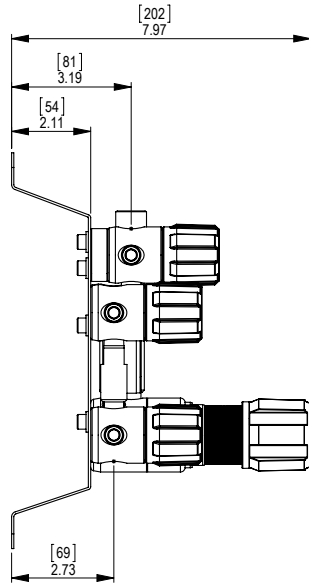
■ Maximum Inlet Pressure	60 bar (870 PSI) 300 bar (4350 PSI)
■ Delivery Pressure Range	20 bar (300 PSI) 50 bar (725 PSI) 100 bar (1450 PSI) 200 bar (2900 PSI)
■ Gauges	50mm (2") Diameter
■ Ports	1/4" NPT Female
■ Temperature Range	-20° C to +60° C (-4° F to +140° F)
■ Helium Leak Integrity	1x10 ⁻⁹ mbar l/s
■ Weight	5.0 kg (11.02 lbs) ****



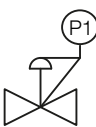



*** Nace and 3.1 material certificates available on request.
Please contact the sales office for further information.
**** Subject to final configuration.

✓ FLOW PERFORMANCE



DRAWINGS



-  Isoation Valve
-  Isoation Valve (closed)
-  Adjustable Pressure Regulator with P1 Pressure Gauge
-  P2 Pressure Gauge
-  Pressure Relief Valve
-  Denotes a Configuration Option

MODEL NO. SELECTOR GUIDE

Example for a Model No. for SGM6230 Series

Product Type	Inlet Pressure Bar [PSI]	Outlet Pressure Bar [PSI]	Inlet Pressure Gauge	Outlet Pressure Gauge	Inlet/Cylinder Connection	Outlet Connection	Options
SGM6231	02 60 [870]	07 0 to 20 [300]	00 No Gauge fitted	00 No Gauge Fitted	000 1/4 NPT Female	00 1/4 NPT Female	A No Options Selected
SGM6232	04 300 [4350]	10 0 to 50 [725]	01 bar/PSI	01 bar/PSI	001 1/8 Stainless Steel Compression	01 1/8 Stainless Steel Compression	F Bonnet Vent Capture Kit
		11 0 to 100 [1450]	02 bar/PSI Contact Gauge		002 1/4 Stainless Steel Compression	02 1/4 Stainless Steel Compression	G Helium Test Certificate
		12 0 to 200 [2900]			003 6mm Stainless Steel Compression	03 6mm Stainless Steel Compression	H 3.1 Material Certificate ***
					004 1/4 NPT Male	04 1/4 NPT Male	J NACE Certificate ***
							K Certificate of Conformity
							M CO2 Burst Disc
							P Calibration/ Pressure Test Certificate
							R Fitted Pipeline Pressure Relief Valve
							X Special Instruction